

## Installation Tips for your RS4-7/PS4-7 + Honda-SL3 (2) + SPDT

T3015, T3053 v1.3 4/25/14

**Honda:** ('98-'02 Accord), ('98-'01 CRV), ('98-'04 Odyssey), ('03-'04 Pilot)

**Acura:** ('98-'99 EL), ('98-'03 CL), ('00-'01 Integra), ('01-02 MDX), ('98-'03 TL)

- ✚ Thank you for purchasing your remote start from MyPushcart.com - an industry leader in providing remote starts to do-it-yourself installers since 1999. We've put this tip sheet together to help you with your installation. The purpose of this sheet is to help you organize your installation - not to replace your installation manual, you will still need to refer to that, there are several safety tips in there that you need to know before you start. If you provided us with your vehicle model/year at the time of purchase, you will have a wiring chart for your particular vehicle. We're going to refer to that a lot. If you do not have the wiring chart, email us at [sales@mypushcart.com](mailto:sales@mypushcart.com) so we can send you a copy. Be sure to include the model/year of your vehicle, your name and your sales order number.
- ✓ Avoid using a test light to probe wires. Test lights can set off air bags if you probe the wrong wire. Your vehicle wiring chart will identify the correct wires that you'll be tapping on to in your car, verify each using a digital multi-meter, they're inexpensive and won't set off air bags.

### Overview

There are 4 basic steps to this remote start installation. We're going to address each of these:

1. Wiring
2. Programming
3. Test the system
4. Close it up!

- ❓ When you open up your remote start, you're going to see a whole bunch of wires. You're not going to use all of them. The remote starts are designed with wiring options for a variety of cars and no car is going to use all of them. We're going to break the wiring down into only the needed wires you need from the remote starter. Here's where the vehicle wiring chart comes into play. The wiring chart will help you locate the wires that you're going to need in your car. Don't be intimidated by all the different wires listed on the chart – you're only going to be using a few of them.

### Reading your wiring chart

Each line of the wiring chart contains 3 pieces of information that you will need:

- The "Circuit" or "Wire/Function"
- The color and polarity of the wire in the car
- The location of the wire in the car

| Wire function     | Wire color in vehicle | Wire location in vehicle |
|-------------------|-----------------------|--------------------------|
| Ignition 12 volts | BLUE/GREEN            | IGNITION SWITCH HARNESS  |
| Starter           | RED/BLUE              | IGNITION SWITCH HARNESS  |
| Dome Light        | BLACK/BLUE (+)        | DRIVER KICK PANEL        |

## Step 1 – Wiring

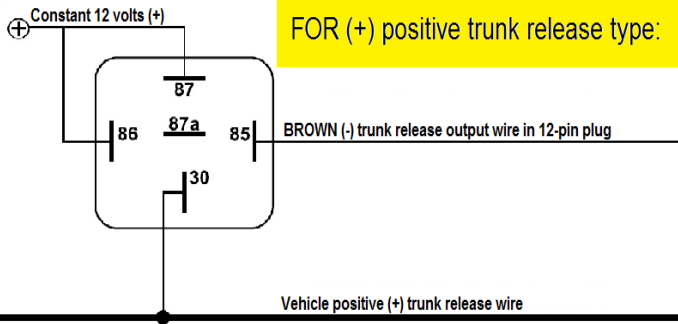
- The following table shows you the necessary wires to connect from the remote starter and what they connect to. Any wires on your remote start that are NOT listed in the table are NOT USED.

| RS4/PS4 Wire:                       | Connect to:   | Found:   | Color:  |
|-------------------------------------|---|--|---|
| <b>6-PIN HARNESS:</b>               |   |  |   |
| RED x2                              | Constant 12v (+)  | Vehicle ignition harness   | WHITE   |
| PINK                                | Ignition  | Vehicle ignition harness   | BLACK/YELLOW  |
| PINK/WHITE                          | accessory #2<br>(not present on all models)<br>(Programming required. See page 5)   | Vehicle ignition harness   | WHITE/BLACK   |
| BROWN                               | starter   | Vehicle ignition harness   | BLACK/WHITE   |
| GRAY                                | Accessory   | Vehicle ignition harness   | YELLOW  |
| <b>12-PIN HARNESS:</b>              |   |  |   |
| RED/WHITE                           | Constant 12v (+)  | RS4/PS4 6-pin harness  | RED   |
| WHITE                               | <b>positive (+)</b> Parking Light wire  | Parking light switch, fuse box, or drivers kick panel                                      | Red/Black   |
| BLACK                               | System Ground   | (solid metal in vehicle)   | n/a   |
| PURPLE                              | Brake switch  | @ switch above brake pedal   | White/Black<br>*GREEN/WHITE for: CRV, Integra, '98 TL, '98-'00 CL, and '98 Odyssey* |
| GRAY                                | Hood pin (included)<br><b>?</b> To prohibit the remote start from activating while the hood is open.  | Under hood<br>*This is an important safety feature!*                                       | n/a<br>(See installers tip #1 on page 7 of this tip sheet for more info)            |
| YELLOW/BLACK                        | HONDA-SL3 (-) when running  | 8-pin plug   | BLUE  |
| <b>The following MAY be needed:</b> |   |  |   |
| ORANGE/BLACK (12-pin harness)       | *OEM Alarm Disarm wire of vehicle*<br><b>?</b> Use only if your vehicle has a factory alarm system that gets tripped when you attempt to activate the remote starter. | Typically found at switch assembly inside driver door (refer to your vehicle wiring chart) | Typically BLUE (refer to your vehicle wiring chart)                                 |

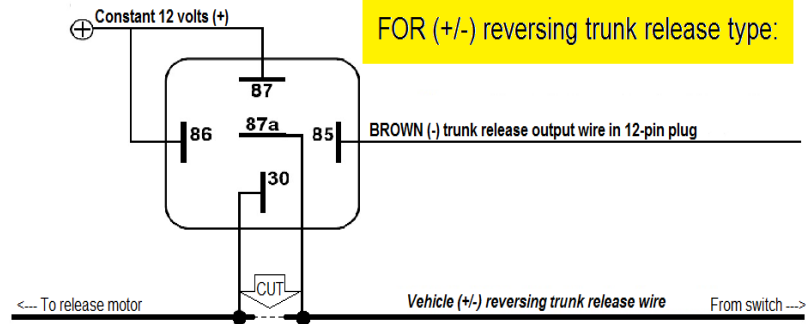
## Vehicle entry wire color chart:

| Vehicle:           | Lock:  | Unlock:  | Trunk release:  |
|--------------------|--|--|---|
| <b>HONDA:</b>      |  |  |   |
| Accord             | BLACK/ORANGE (-)<br>@ Passenger side fuse box, in a green 20-pin plug                                | BLUE/ORANGE (-)<br>@ Passenger side fuse box, in a green 20-pin plug                             | GREEN/BLUE (-)<br>for (LX) models,<br>WHITE/RED (+)<br>for (EX) models<br>@ KEYLESS<br>MODULE |
| CRV                | GREEN/WHITE (-)<br>@ Drivers kick panel  | GREEN/ORANGE (-)<br>@ Drivers kick panel   | YELLOW (+)<br>@ Release switch  |
| Odyssey<br>1998    | BLACK/WHITE (-)<br>@ 4-pin grey plug above fuse box in blue tape                                     | ORANGE (-)<br>@ 4-pin grey plug above fuse box in blue tape                                      | n/a   |
| Odyssey<br>'99-'03 | BLACK/WHITE (-)<br>@ Bottom of fuse box in green 6-pin plug  | GREEN/RED (-)<br>@ Bottom of fuse box in green 6-pin plug  | n/a   |
| Odyssey<br>2004    | BLACK/BLUE (-)<br>@ Passenger fuse box.<br>20-pin plug for (LX) models<br>3-pin plug for (EX) models | ORANGE (-)<br>@ Passenger fuse box.<br>20-pin plug for (LX) models<br>3-pin plug for (EX) models | n/a   |
| Pilot              | BLACK/ORANGE (-)<br>@ Passenger fuse box in green 20-pin plug (E), pin-6                             | BLUE/ORANGE (-)<br>@ Passenger fuse box in green 20-pin plug (E), pin-5                          | n/a   |
| <b>ACURA:</b>      |  |  |   |
| EL                 | RED/YELLOW (-)<br>@security module under passenger seat  | RED/BLUE (-)<br>@security module under passenger seat  | n/a   |
| CL<br>'98-'00      | RED/YELLOW (-)<br>@security module under passenger seat  | RED/BLUE (-)<br>@security module under passenger seat  | n/a   |
| CL<br>'01-03       | BLACK/BLUE (-)<br>@ Front of passenger fuse box in gray 22-pin plug                                  | ORANGE (-)<br>@ Front of passenger fuse box in gray 22-pin plug                                  | WHITE (+)<br>@ MUX module<br>behind glove box   |
| Integra            | BLACK/WHITE (-)<br>@ Larger of 2 gray plugs in drivers kick panel                                    | BLACK/RED (-)<br>@ Larger of 2 gray plugs in drivers kick panel                                  | BLUE/WHITE (+)<br>@relay in left trunk  |
| MDX                | BLACK/ORANGE (-)<br>@ Passenger side fuse box in a 20-pin blue plug, pin-6                           | BLUE/ORANGE (-)<br>@ Passenger side fuse box in a 20-pin blue plug, pin-5                        | n/a   |
| TL<br>1998         | GRAY (-)<br>@ Passenger door harness   | GREEN/YELLOW (-)<br>@ Passenger door harness   | n/a   |
| TL<br>'99-'03      | BLACK/BLUE (-)<br>@ Front of passenger fuse box in gray 22-pin plug                                  | ORANGE (-)<br>@ Front of passenger fuse box in gray 22-pin plug                                  | WHITE (+)<br>@ Driver kick panel (from door)  |

- ✓ If your vehicle has a (-) negative trunk release, connect the BROWN trunk release wire from the remote starter directly to the vehicle wire. Check your vehicle wire chart to see it has a (+) positive, or 5-wire reversing (-/+ type, test with a meter to verify, then connect the included relay in the corresponding configuration as follows:



FOR (+) positive trunk release type:



FOR (+/-) reversing trunk release type:

➤ Before proceeding, plug the antenna, programming button & LED into the remote start.

### HONDA-SL3 bypass module wiring:

➤ Plug one end of the 4 pin data cable into the HONDA-SL3 data port and plug the other side of the 4-pin data cable into the corresponding data port of the remote starter.

■ The following table shows you the necessary wires to connect from the bypass module and what they connect to. Any wires on your module that are NOT listed in the table are NOT USED.

| Bypass wire:      | Connect to:                                 | Color/Location  |
|-------------------|---|---|
| <b>8-PIN PLUG</b> |   |   |
| BLUE              | (-) status programmable output              | BLUE<br>@ (3-pin red SAT. relay plug of RS4/PS4)  |
| ORANGE/BLACK      | Plug side of cut DATA wire (see diagram)    | RED<br>@ (pin-2 of 5-pin transponder plug)<br>*This wire is BLUE/GREEN for the Odyssey*   |
| ORANGE            | Vehicle side of cut DATA wire (see diagram) | RED<br>@ (pin-2 of 5-pin transponder plug)<br>*This wire is BLUE/GREEN for the Odyssey*   |
| PURPLE/WHITE      | Vehicle side of cut DATA wire (see diagram) | RED<br>@ (pin-2 of 5-pin transponder plug)<br>*This wire is BLUE/GREEN for the Odyssey*   |
| YELLOW/BLACK      | Synchro wire (see diagram)                  | BLUE<br>@ (pin-3 of 5-pin transponder plug)<br>*This wire is ORANGE/BLUE for the Odyssey* |
| YELLOW            | Ignition                                    | PINK<br>@ (6-pin plug of RS4)   |

➤ The following diagram illustrates all of your needed connections. As always, it is the responsibility of the installer to verify all vehicle wiring using the vehicle wiring chart and a multi-meter prior to making any connections:



## Step 2 – Programming

The RS4-7/PS4-7 needs to have option 4 set to “ACC” value only if your vehicle has a second accessory wire that needs to be powered up to operate climate controls, otherwise no programming from default values is required for remote start operation. If you wish to change any options to customize the functionality of the remote starter, a matrix of all programmable features and their options are below. Use the procedure below to make any desired changes:

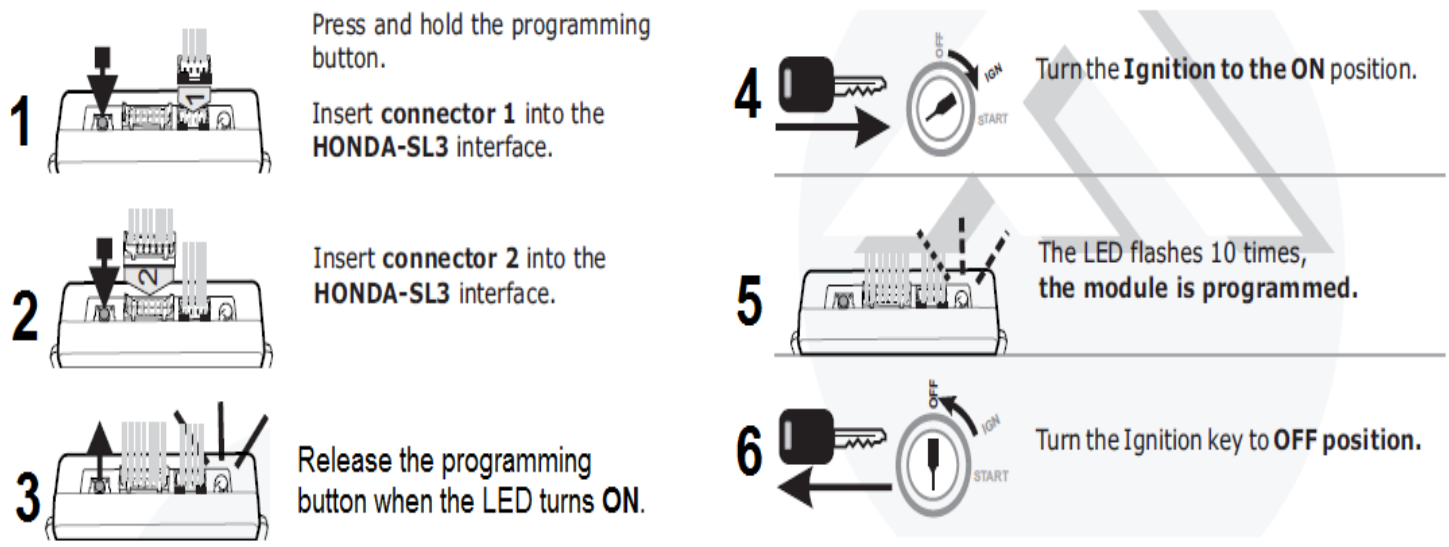
1. Turn Ignition Key to the ON position. Do not start vehicle.
2. Press the Program / Valet button 5 times. Wait for the unit to flash the lights and/or horn honk 5 times.
3. Push the valet program button the number of times that corresponds to the option number desired (1-28X). You must get a light flash and/or honk after each button press. If the system did not flash the lights and/or honk, then it did not register your press. Press carefully and do not lose count.
4. **For RS4-7& PS04-07:** When you reach the desired option #, to change the option: Press button #1 **Lock**, #2 **Unlock**, #3 **Trunk**, #4 **Start**. (Some option numbers use ALL 4 remote buttons to select settings)
5. When finished, turn Ignition OFF, and check for changed features.

**OPTION PROGRAMMING TABLE**

| Option # | Option Description                               | TX Button #1 (Lock)                                    | TX Button #2 (Unlock) Default Value | TX Button #3 (Trunk)   | TX Button #4 (Start)                                      |
|----------|--|--|-------------------------------------|--|---|
| 1        | Engine Monitoring                                | Tach   | *Tachless*                          |  | Hybrid  |
| 2        | Autolock with RPM / Ignition                     | ON   | *OFF*                               |  |   |
| 3        | Door Lock Pulse                                  | 3 Seconds  | *0.50 Seconds*                      | Double Unlock  | “Wake Up” pulse with Unlock                               |
| 4        | Pink/white Wire Selection                        | ACC  | *IGN*                               | START  |   |
| 5        | Data Port Protocol                               | ADS iDataLink - OFA Series                             | *Fortin - EVO / SL Series*          |  |   |
| 6        | Remote Start Button Selection                    | Double Button Press                                    | *½ Second Press*                    | Press 2 seconds & release  |   |
| 7        | Horn Chirps on Remote Start                      | ON   | *OFF*                               |  |   |
| 8        | Lock with Remote Start / Abort                   | OFF  | *Lock after Remote Start*           | Lock after Remote Start and Arm OEM Alarm with Abort                           | Lock / Arm OEM Alarm with Abort                           |
| 9        | Brown wire function                              | Dome Light   | *Trunk pop*                         | Double Press Trunk   | Press and Hold 2 seconds                                  |
| 10       | Unlock before Remote Start (to Disarm OEM Alarm) | ON   | *OFF*                               |  |   |
| 11       | Transmission Type                                | Manual Transmission with Remote Control                | *OFF*                               | Manual Transmission set with Hand Brake  | Manual Transmission with auto shut down after door closed |
| 12       | Idle Down Timer                                  | 10 Minutes   | *20 Minutes*                        | 30 Minutes   | Infinity Run  |
| 13       | Horn Chirp Confirmation                          | 1 Press  | *2 Press*                           |  |   |
| 14       | Unlock with Trunk Pop                            | Unlock/Trunk Pop                                       | *Trunk Pop only*                    |  |   |
| 15       | 30 Sec. Park Lights with Unlock                  | OFF  | *ON*                                |  |   |
| 16       | Horn Pulse (Chirp)                               | 15 milliseconds  | *20 milliseconds*                   | 40 milliseconds  |   |
| 17       | OEM Interface Green input wire                   | 3 pulse start with OEM remote thru Data                | *1 Pulse*                           |  |   |
| 18       | Minimum Starter Cranking Time                    | (-) 0.1 Seconds  | *0.8 Seconds*                       | (+) 0.1 Seconds  | (+) 0.4 Seconds   |
| 19       | Diesel Glow Plug Delay                           | 10 Seconds   | *Monitor Glow Plug*                 | 15 Seconds   | 20 Seconds  |
| 20       | Remote Start Engine Run Time                     | 10 Minutes   | *20 Minutes*                        | 30 Minutes   | 5 Minutes   |
| 21       | Smart Tachless Voltage Adjustment 79-100%        | -1%  | *Set to 93% default*                | +1%  |   |
| 22       | Turbo Timer Mode                                 | 1 Minute   | *OFF*                               | 3 Minutes  | 5 Minutes   |
| 23       | Unlock on Start Button with Ignition ON          | Momentary press = Unlock<br>2 Sec. press = Abort Start | *OFF*                               |  |   |
| 24       | Orange/white wire Selection                      | IGN  | *ACC*                               | AUX 2  |   |
| 25       | Orange Wire Selection                            | AUX 2  | OEM Arm                             |  |   |
| 26       | 1-Way or 2-Way System                            | 2-Way  | 1-Way                               |  |   |
| 27       | 1 or 2 VEH Mode                                  | 2 VEH Mode   | 1 VEH Mode                          | In 1 VEH Mode, the Red and Blue LED on Remote Control operate the same vehicle |   |
| 28       | Reset Options to Default (*)                     | Reset Options 1 thru 25 (2 Flashes)                    |                                     |  |   |

## HONDA-SL3 bypass module programming:

Once you have successfully made your connections, you'll want to program the bypass to sync it up with the vehicle. Perform the following steps to program your bypass module:



### Step 3 - Test the System

Once all programming is done, you should test the system to make sure everything is working properly before you connect the activation wire and close up the installation.

1. With the key removed from the ignition, press the start button on your remote.
  - Parking lights and gauges should power up and in a moment, the vehicle should start.
2. Make sure the vehicle stays running, and that the climate controls are working.
3. Press the brake pedal.
  - The engine should shut down.
4. Press the lock button on your remote, make sure the vehicles doors lock. Press the unlock button on your remote, make sure the vehicles doors unlock. Press the trunk button on your remote, make sure the trunk or back hatch releases.
5. If your tests are successful proceed to “step 4 - close it up” below.
  - If your tests were unsuccessful, go back and re-check your wiring and programming.

### Step 4 – close it up

Now gather up all your wiring and neatly bundle it together using zip ties or electrical tape. Find a secure place to put the remote start module and use zip ties to secure it. **Make sure that the remote start wires are not near any moving parts on the steering wheel, pedals or emergency brake!**

# Installer's Tips:

## Tip #1 – Where Everything Goes

1. *Remote start module* – the wiring for the module is done under the dash on the driver's side, so you'll want to install the module in that general area. Before you start wiring, look for a location where there's some open space that will fit the module. Pay attention to moving parts like the pedals, e-brake and steering column. Be sure to route your wiring away from those areas.
2. *Bypass module* – can be stowed along with the remote start.
3. *Programming button* – Requires a ¼" hole. Usually put in the driver's kick panel (that's the area forward of the door), the driver's side of the center console, or the underside of the dash.
4. *Hood Pin Switch* – An important safety component! Requires a 3/8" hole. Find a location in the engine compartment to mount the switch where the closed hood will keep the plunger in the switch depressed. This is what prevents the car from starting when the hood is open.
5. *Status LED* – Not required for normal operation but can be helpful for troubleshooting. Can be mounted anywhere you like – or unplugged and not used once the installation is completed.
6. *Activation relay* – can be stowed along with the remote start.

## Tip #2 – How to make your wiring connections

*It's very important that all your wiring connections be solid and secure. All remote start connections are "tap on" connections. This means that you do not need to cut the wires in the car. You simply need to "tap on" to the wires in the car to make your connections. Here are three different ways to do this:*

### Method 1 – Solder and tape

This is the method preferred by the best professional installers. It makes for the most reliable connections, but it is also the most difficult to do. Sometimes there isn't enough room in the wiring harness to safely solder a wire without damaging adjacent wires, but if you have the soldering skills, go for it. To make a connection, strip back a section of the insulation on the wire in the car. On heavy gauge wires, 1" is about the right amount. On lighter gauge wires, ½" is fine. Strip 1" of insulation off the end of the remote start wire. Tin the bare section of wire in the car. Wrap the remote start wire around the tinned section and then carefully solder it in place. Wrap the splice tightly with electrical tape.



## Method 2 – Wrap and tape

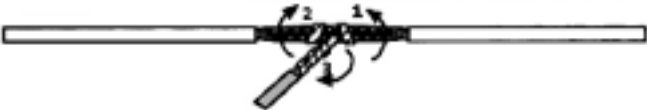
This is the most popular method and is also very reliable. Strip back a section of the insulation on the wire in the car. On heavy gauge wires, 1" is about the right amount. On lighter gauge wires, ½" is fine. Strip 1" of insulation off the end of the remote start wire. Separate the strands of the wire like this:



Pass the wire from the remote through the opening as shown below



Wrap the remote start wire around both sides of the car wire, then back around itself as shown below



Use electrical tape to wrap the connection and secure the wires together. A wire tie will help prevent the tape from unraveling in the future.



## Method #3 – “T-Taps”

T-taps are plastic clips that are squeezed onto the wires in the car. The wire from the remote start goes into the tap and the whole thing is crimped together. T-taps come in different sizes for different size wires. Use yellow t-taps for the larger wires in your main power harness. Red t-taps are good for the smaller wires. Tape and wire tie the connections as shown in the “wrap and tape” section above – that will prevent the t-taps from ever opening up.

### Using T-Taps

Use a pair of pliers to attach the quick-connects to the wires in your car. Hold the quick connect as shown below in Figure 1, then clamp it on to the wire as shown in Figure 2. There is a locking tab at the front of the connector (Figure 3) – make sure it is secure and locked in place when you are done.



Figure 1



Figure 2



Figure 3